

**Hort
Innovation**
Strategic levy investment

**ALMOND
FUND**

Corrine Jasper
Relationship Manager



Almond Strategic Investment Advisory Panel (SIAP)

Paul Martin

Brendan Sidhu

Ross Skinner

Domenic Cavallaro

Claude Gauchat (Independent Chair)

Toby Smith

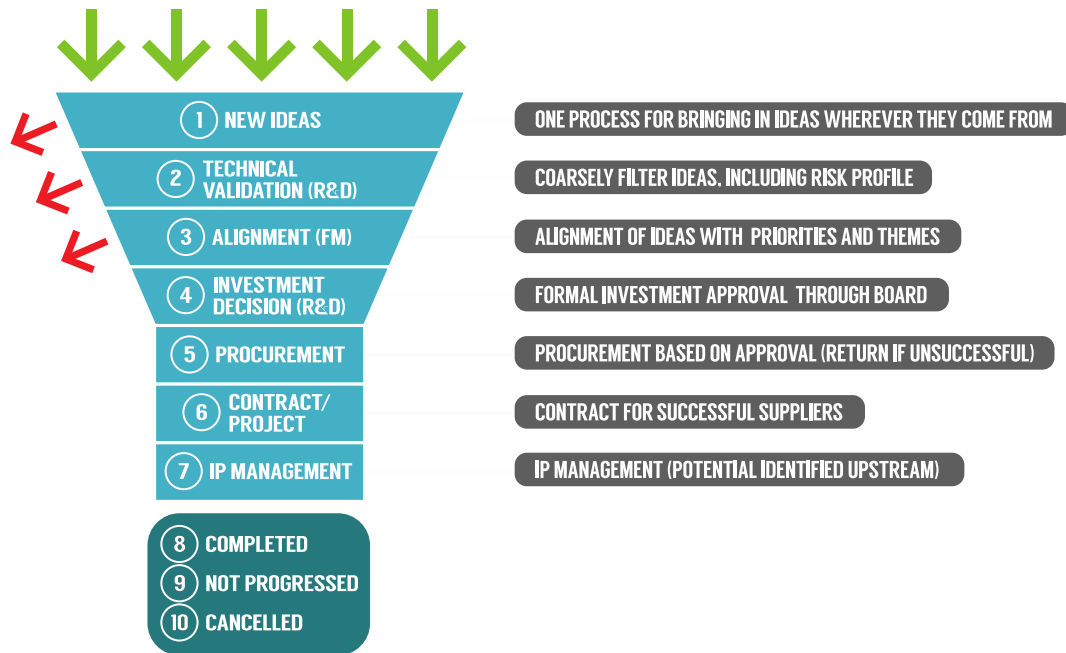
Ben Brown

Craig Simes

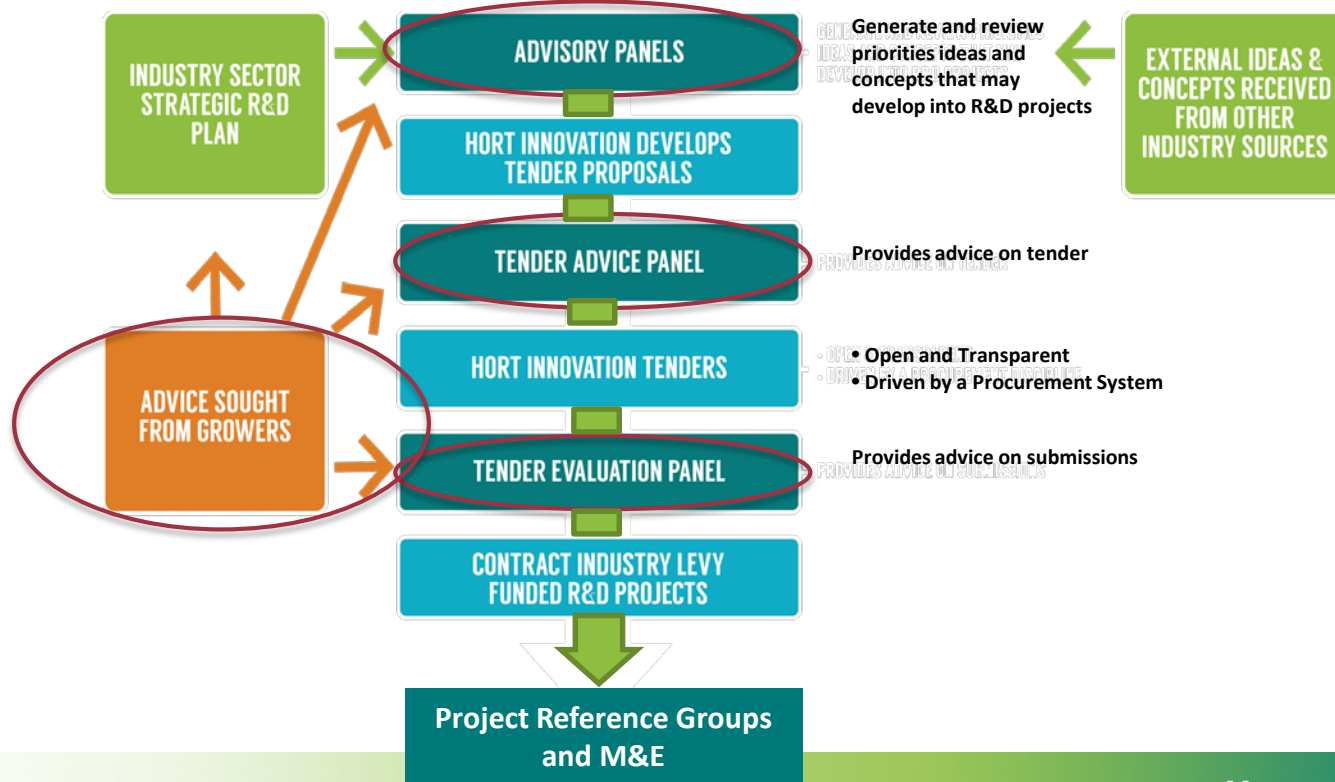
Troy Richman



Innovation process (funnel)



Advisory mechanism



Strategic Investment Plan - R&D

- Consultation undertaken in 2016/17
- One on One with growers and industry members
- Conference
- Almond Board of Australia Executive and sub committees
- SIAP

Strategic Investment Plan

Major opportunities

- Additional growth in Australian almond sales to Asia.
- Further research and promotion of the health benefits of consuming almonds – almonds are an excellent source of protein, vitamin E, dietary fibre and mono-saturated fat.
- Additional strategic links with the Californian and Spanish industries to shortcut technology evaluation and share almond production, processing and marketing knowledge.

Strategic Investment Plan

Major Challenges

- Increased production may threaten current profitable almond prices
- Volatile Australian dollar making Australian product expensive relative to that sourced from California
- Newly emerged pest and disease problem that has resulted in a major increase in serious defects in harvested almonds
- A heavy reliance on honey bee for pollination
- Significant user of irrigation water – 600 gigalitres per annum forecast by the time this plan has been fully implemented (ABA 2016).

SIAP Meetings

- **Four Meetings held since June 2016**
- **Gap Analysis**
- **Over 25 concepts tabled**
- **15 projects tendered**



Projects Contracted

- Australian Almond Industry Communications Programme
- Australia Almond Industry Innovation and Adoption Program
- Almond Minor Use Permit
- Almond Industry Statistics and Data collection 2017-2019
- Development of high health status mother planting for new Australian almond varieties
- Australia almond industry conferences and field days 2017- 2021
- Almond Study Tour
- Enhanced National Bee Pest Surveillance Program 2016–2021
- Horticultural Trade data 2017-2019
- Almond Rootstock Evaluation – Stage 2
- Integrated Pest Management (Soon to be contracted)
- Integrated Disease Management (Soon to be contracted)

Collaborate & Co-invest in Australian Hort R&D

Alok Kumar,
Business Development Manager

24 October, 2017



Hort Innovation

Strategic levy investment

- Levy based
- Specific industries
- Maintain the industry
- Focus on today's issues

hort frontiers

Strategic partnership initiative

- Co-investment based
- All of horticulture
- Focus on key issues now to deliver in 2025
- Invest for future

Hort
Innovation

hort frontiers Investment Funds



Strategic partnership initiative

ADVANCED PRODUCTION
SYSTEMS FUND



Strategic partnership initiative

POLLINATION
FUND



Strategic partnership initiative

FRUIT FLY
FUND



Strategic partnership initiative

HEALTHY FOOD
FUND



Strategic partnership initiative

GREEN CITIES
FUND



Strategic partnership initiative

ASIAN MARKETS
FUND



Strategic partnership initiative

LEADERSHIP
FUND

Hort
Innovation



Facilitates collaborative cross-industry investments focused on longer-term, complex and traditionally underinvested themes identified as critical for Australian horticulture in 2025

Funds can be co-invested from:

- Non-horticulture commercial industries
- Universities
- Public and private research institutes
- State government agencies
- Horticulture levy funds

Whilst the individual goals of co-investment partners may differ, investment outcomes need to benefit all-of-horticulture to be considered



**Hort
Innovation**

Pollination fund



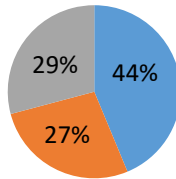
About Pollination fund

- Pollination fund is just under an year old
- Reduce the risks to pollination dependant horticulture, to ensure a sustainable future for Australian horticulture produce
- Significant investments made and continued growth in the portfolio
- Total- \$32M



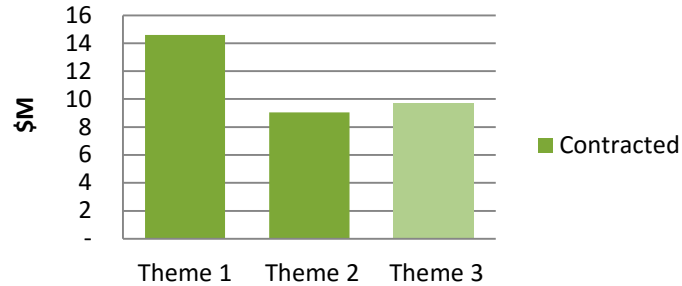
1. Managing European honey bee health
2. Optimise crop pollination
3. Identify & deploy Alternate Crop pollinators

Percentage of Contracted Investment



- Theme 1
- Theme 2
- Theme 3

Total Investment by Theme



PH15000 - Strengthening and enabling effective pollination for Australia

PH15001 - Healthy bee populations for sustainable pollination in horticulture

MT16005- National Bee Pest Surveillance Program (NBPSP).

PH16001-Increasing yield & quality in tropical horticulture with better pollination, fruit retention & nutrient distribution

PH16004-Securing Pollination for productive agriculture (RIRDC)

PH16000 Stingless bees as effective managed pollinators for Australian horticulture

Theme 1	
4853590.57+7201111.37+2528141.00	
\$	14,582,843
\$	-

Manage European honey bee

Theme 2	
1778055.98+7268239.54	
\$	9,046,296

Optimise Crop pollination

Theme 3	
\$	9,719,405.54

Alternate crop pollinators

Co-investment & Research Partners



Hort
Innovation

Advanced Production Systems fund





ADVANCED PRODUCTION
SYSTEMS FUND

1. Farm Automation

Robotics, Autonomous vehicles (driverless tractors), Sensors, irrigation, etc.

2. Intensive cropping Systems

Optimise farm inputs, protected cropping, plant morphology, practices

3. Innovation & Disruption

New genetics, genomics, productivity traits, rootstocks, crop architecture, etc.



Fruit fly fund

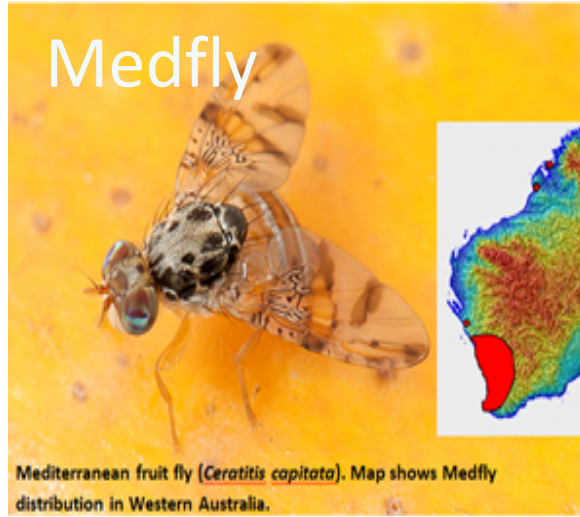


Global and Domestic Partnerships

Qfly



Medfly



Stablefly



Healthy Food fund



**Theme 1 - Value Chain: Understand
& Integrate**

HN15000 – Innovative cold plasma
for horticultural industries

**Theme 2 - Consumer Behaviour:
Understand demand, preference & risks**

HN15003- Healthy Eating Pilot

**Theme 3 - Innovation: Develop new
products & technologies**

HN15001 – Naturally nutritious

HN15002- Innovative 3D Printing
Technology for creating personalized
food using horticulture
ingredients

**Theme 4 - Adoption: Source, collate
& share good information**

HN16001: Understanding consumer
behaviour (insights & barriers) to
increased consumption of nuts

Thank you



See how we can better support you

Your industry's Relationship Manager is keen to chat with you about the latest developments in your industry

Have us call you



Let's talk about your industry

Astrid Hughes
Relationship and Marketing Manager
Hort Innovation

Membership helps us keep you in the loop:

Hortlink – a quarterly update on strategic levy investments for all levy funds

GrowerIntel – industry-specific news and information about your levy fund investments

Growing Innovation – news and articles that contain the latest cross-sector and media exposure updates

Events – direct invitations to participate in industry events, as well as Hort Innovation consultations and forums that help you stay connected to the company, the research, and each other

Networking – member-specific events where you can meet with other like-minded growers and the Hort Innovation team, and hear about the latest investments in R&D and marketing from experts

Voting – levy payers can have a say at the AGM by registering for voting entitlements – decisions about the company are made via this mechanism. Every vote counts!

**Hort
Innovation**

Corrine Jasper
Relationship Manager
Hort Innovation



**I will fill out
the membership
application form
on your behalf.**

**Have a chat with me
today and hear how I can
support you.**

**Hort
Innovation**