



Choke or Bottleneck on Development

Dr Mark Bailey
Goulburn-Murray Water

18th Australian Almond Conference

Pullman Hotel Melbourne, Albert Park, Victoria

October 30th - November 1st, 2018



SUPPORTED BY:
Horticulture Innovation Australia Ltd



HOSTED BY:
The Almond Board of Australia



Contents



**18th Australian
Almond Conference**
October 30th - November 1st, 2018

- The changing landscape
- The nature of the risk
- Mitigation options
- Options to control risk

Neil Andrew AO – 25 October 2018



**18th Australian
Almond Conference**
October 30th - November 1st, 2018

"Another area where all jurisdictions should redouble their efforts is to work together to manage the ongoing risk of water delivery shortfall in the River Murray system.

"A water delivery shortfall can happen when demand exceeds the physical capacity of rivers to carry the water, or when demands for water spike and there's not enough time to release more.

"Factors like changes in land use, changes in climate and extreme heat, and changes in water use can all effect the risk.

"The Authority urges all water users along the River Murray, especially downstream of the Barmah Choke, to understand the risk of water delivery shortfall and take it into account in their business planning and investment decisions."

Neil Andrew AO, Chair, Murray-Darling Basin Authority

A Changing Landscape



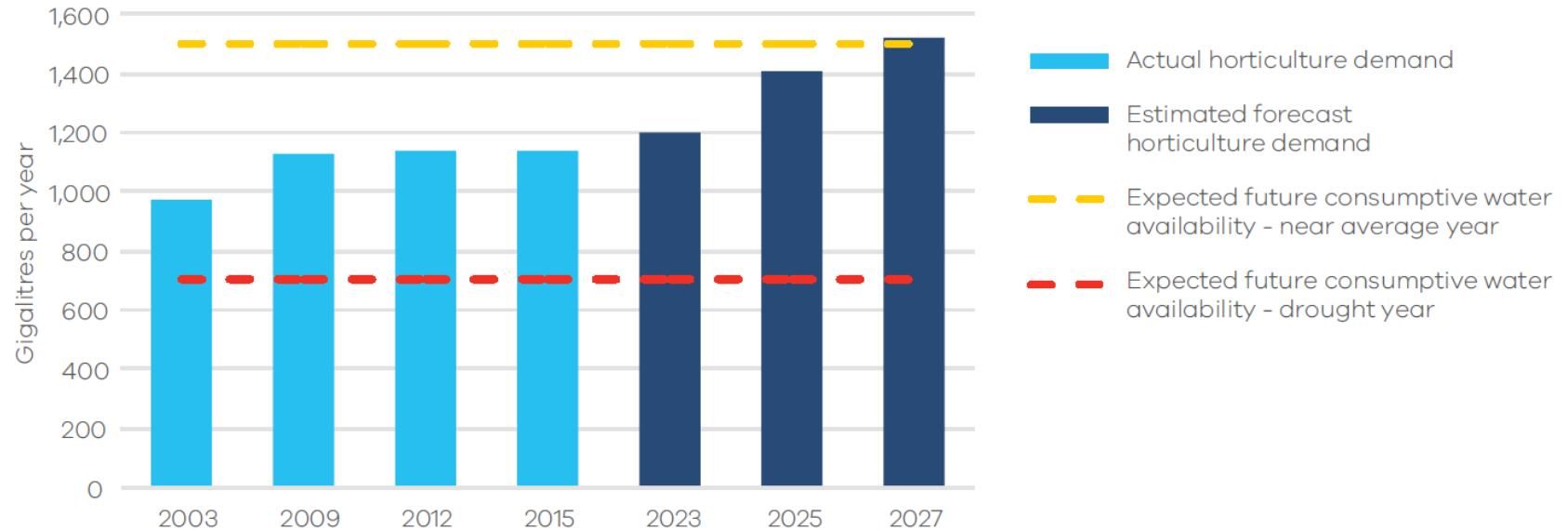
**18th Australian
Almond Conference**
October 30th - November 1st, 2018

- Change across the Southern Connected Basin
 - Growing demand
 - Changing ownership
 - Changing climate
 - Changing river conditions
- Two main changes for river operations
 - Environmental water use
 - Horticulture growth

Increasing Horticulture Demand



18th Australian Almond Conference
October 30th - November 1st, 2018



The Location is the Risk



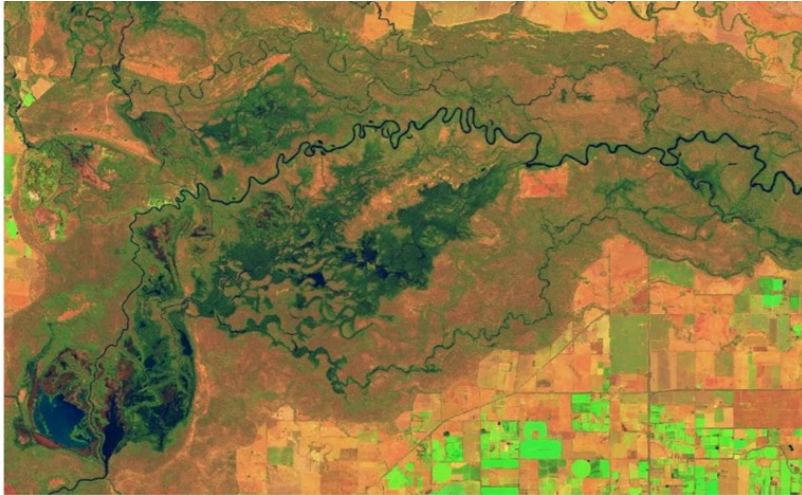
18th Australian Almond Conference
October 30th - November 1st, 2018



Imagery of the Barmah Choke



**18th Australian
Almond Conference**
October 30th - November 1st, 2018



The Risks



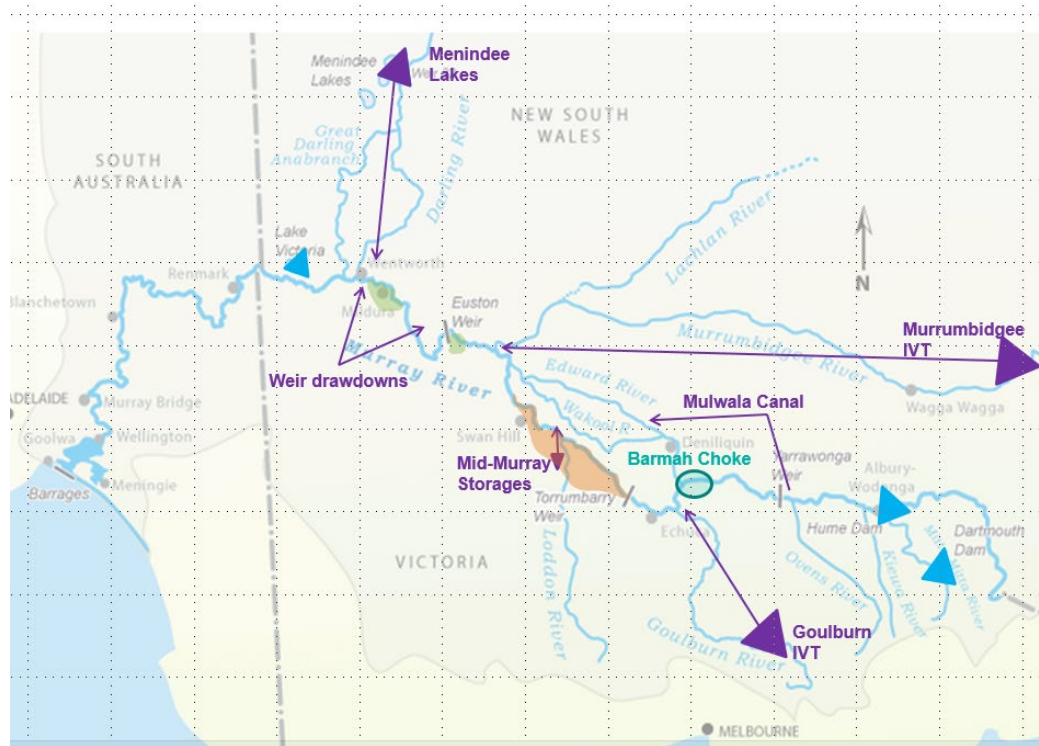
**18th Australian
Almond Conference**
October 30th - November 1st, 2018

- Barmah Choke capacity – 9,500 ML/day (and decreasing)
- Tributary capacity (eg lower Goulburn River)
- Concentration of demand timing
 - Summer
- Concentration of demand location
 - Downstream of the Goulburn Murray Irrigation District
 - Further away from the major storages
- Operational levers exist

Risk Mitigation Options



**18th Australian
Almond Conference**
October 30th - November 1st, 2018



What Else is Happening?



**18th Australian
Almond Conference**
October 30th - November 1st, 2018

- Information provision
 - Water availability
 - Operations
 - Fact sheets (eg delivery shortfall risks, future water availability)
- System planning
 - MDBA Annual Operating Plan, including inter-valley trade resources
 - Managing water orders
- Rules reviews
 - Victorian trading rules (eg inter-valley trade limits)

Conclusion



**18th Australian
Almond Conference**
October 30th - November 1st, 2018

- Risks are difficult to quantify
 - Many variables
 - Continually evolving
 - Short-term temperature peaks are the greatest threat
- Agencies are planning collaboratively
 - Communications to water users
 - Policies
 - Sharing arrangements

More Information



**18th Australian
Almond Conference**
October 30th - November 1st, 2018

- Murray-Darling Basin Authority
 - www.mdba.gov.au
- Northern Victorian Resource Manager
 - www.nvrm.net.au
- Victorian Water Register
 - www.waterregister.vic.gov.au