



Better tree performance and water use efficiency through root system resilience

Everard J. Edwards

Shuang-Xi Zhou, Alex Lawlor, Adelle Semmler & Rob Walker

Australia's National Science Agency





I would like to begin by acknowledging the Traditional Owners of the land that we're meeting on today, and pay my respect to their Elders past and present.



AL13009: project aims

1. Comparative assessment of the resilience of available *Prunus* rootstocks to abiotic stresses,
 - *develop a rapid screening method (greenhouse).*
2. Optimised management for root systems and rootstocks (irrigation and fertigation),
 - *improved understanding root phenology, function, activity via greenhouse and field experiments.*



Rootstock resilience screen

Growth is the ultimate measure of a plant's performance.

We used *Relative Growth Rate* (RGR = increase in biomass per unit of biomass per day).

Screening is defined by a stress index:

$$\text{Stress index} = \frac{RGR \text{ stress}}{RGR \text{ control}}$$



Rootstock genotype	Water deficit index (50% ETc)	Soil conductivity index (3.3 dS m ⁻¹)
Barrier 1 / Empyrean	1.0	1.0
Bright's Hybrid	0.4	0.8
Controller 6	1.1	1.0
Controller 7	0.4	0.9
Controller 9.5	0.4	0.6
Cornerstone	0.5	0.8
Garnem	0.4	0.8
GF677	0.5	1.0
Krymsk 86	0.4	1.0
Nemaguard	0.5	0.6
RootPac 20	0.4	0.8

Improved understanding of almond root systems

Examined impact of water and N availability on root growth, location and phenology,

- collaborated with AL14005 on water/N use field experiments,
- also examined whole tree water use.

Determined phenology and root age effects on N uptake,

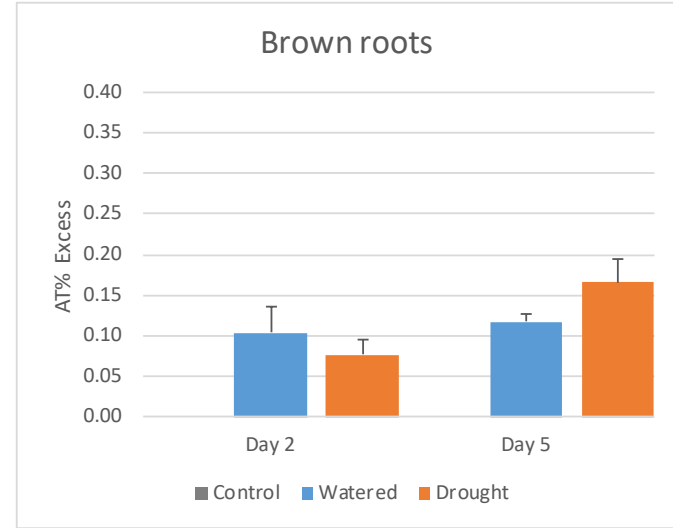
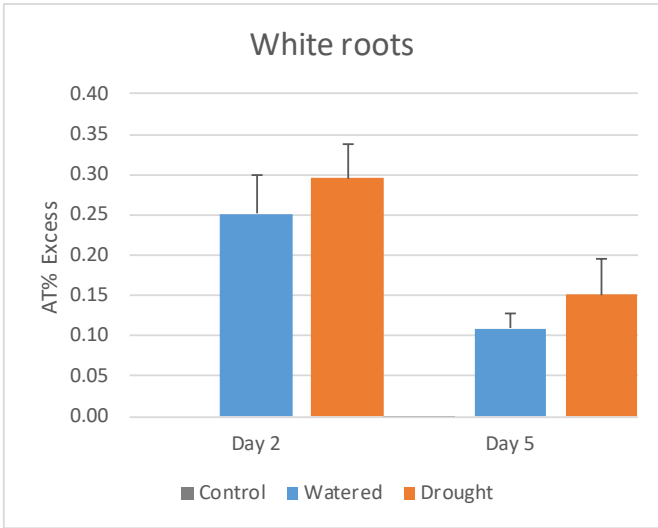
- Greenhouse and field pot experiments using stable N isotope.

Examined rootstock : scion interactions on N uptake and allocation,

- Greenhouse experiments using stable N isotope.



Root age effect on N uptake by fine roots

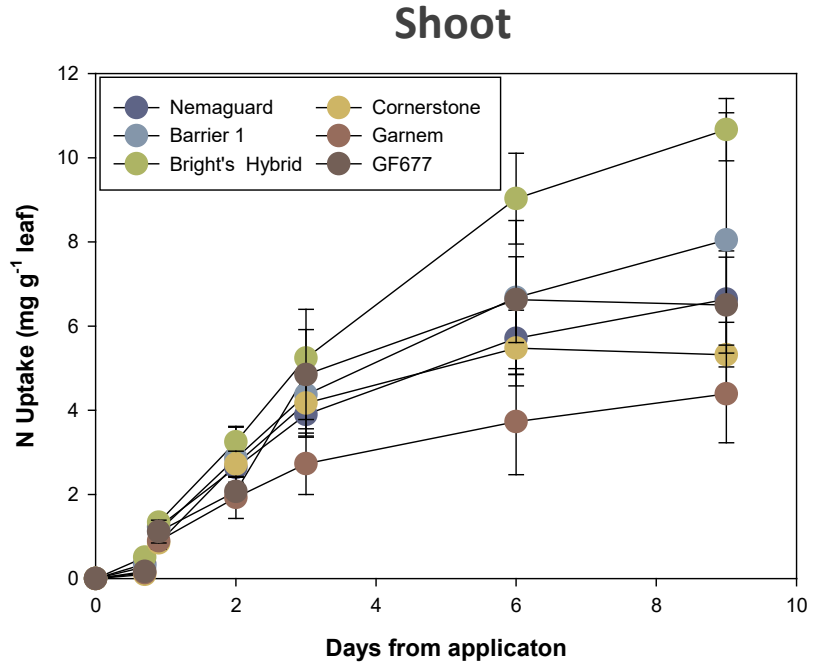
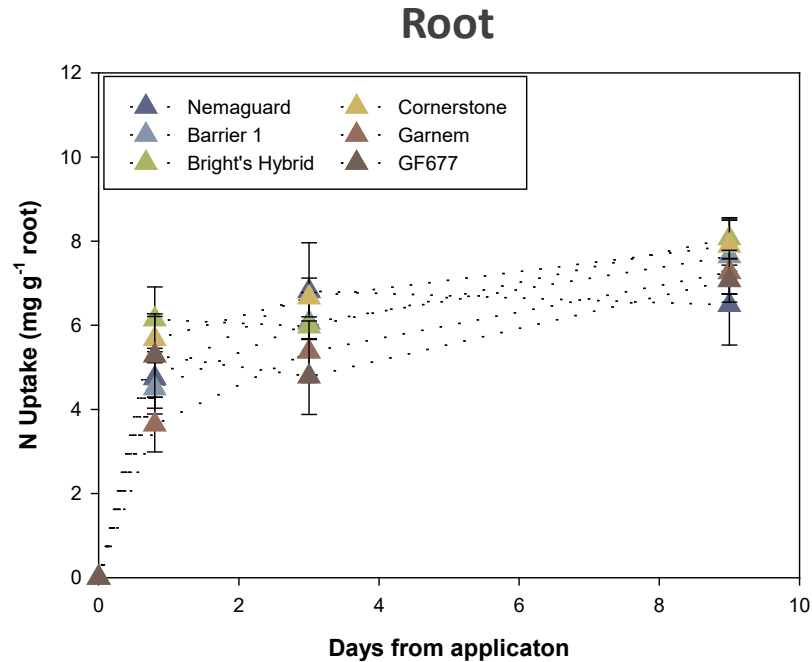


White roots typically < 2 weeks old.

Brown roots still take up N, approx. half rate of white roots.

Note that much greater brown root mass than white root mass in root system.

Rootstock affects rate of N transport to shoot

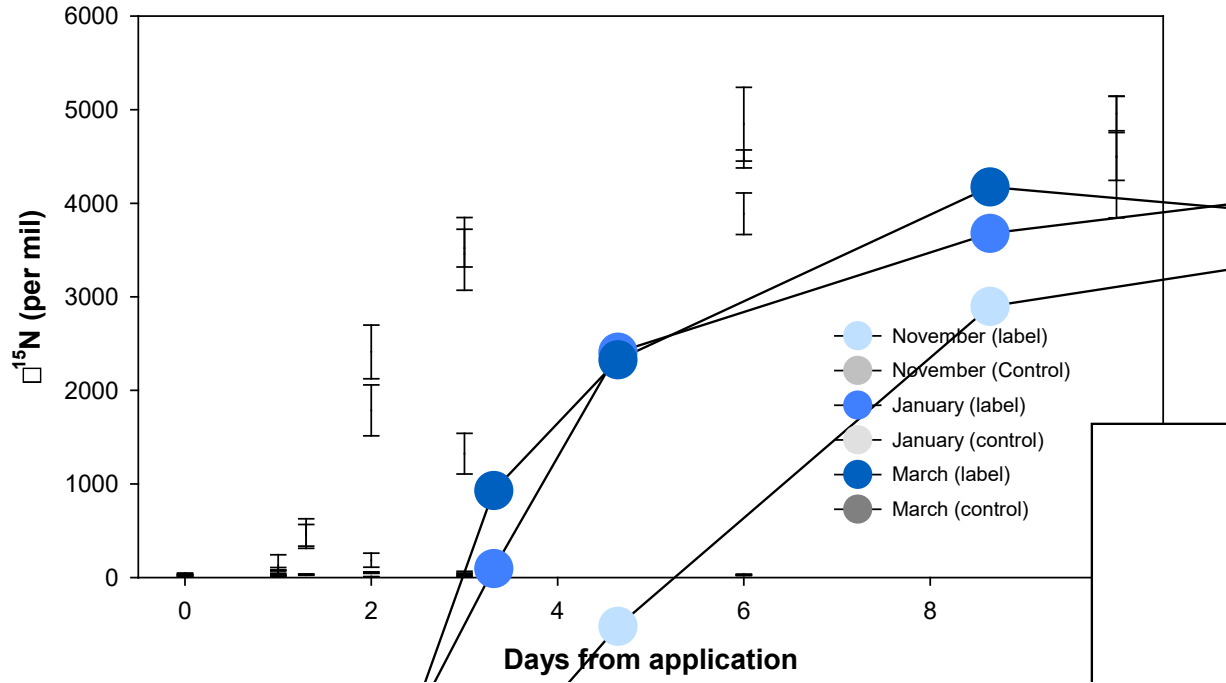


Rapid root uptake of N.

Accumulation in shoot slower.

Roots will take up N throughout season

N accumulation
in leaves

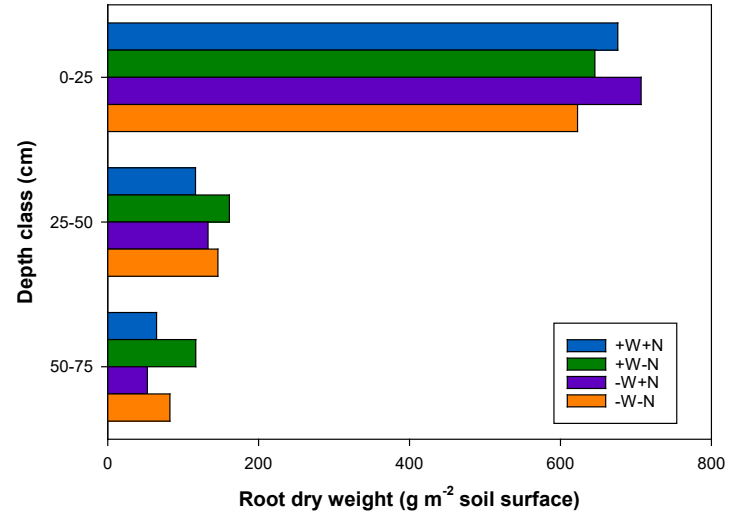
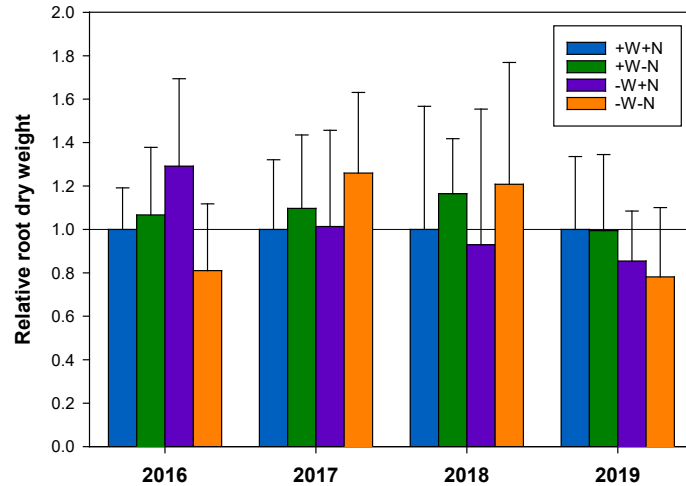


Canopy still present in March, cooler than November.
Uptake slower in November, but active growth period.

Nonpareil : Nemaguard – field (200L pots).



Reduced inputs affect position but not amount of fine root

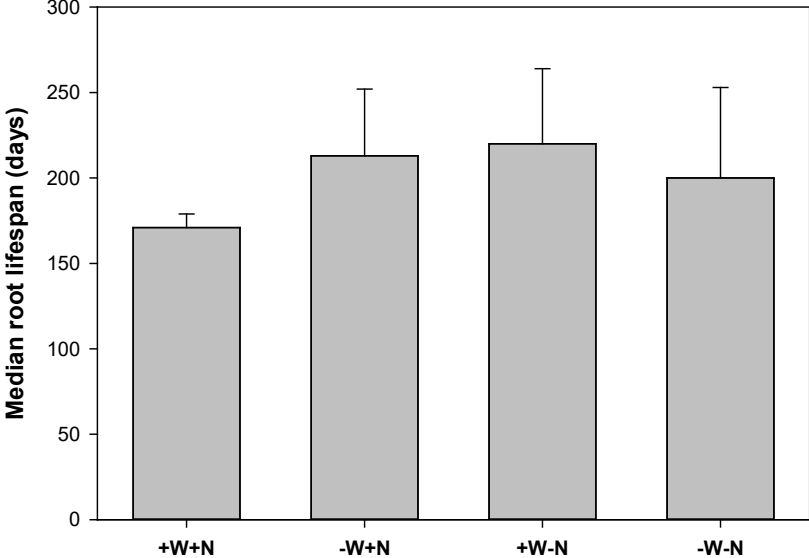


CMV
FARMS



Data from Ag Vic field site, winter coring.

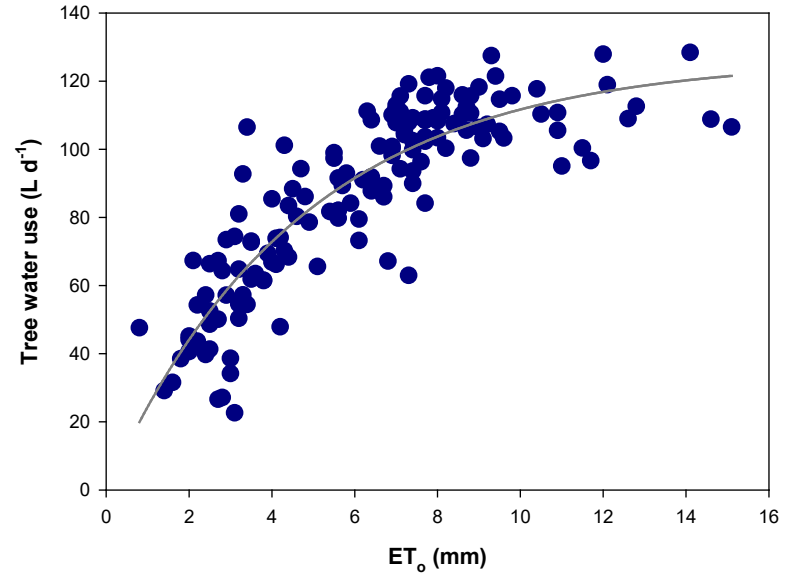
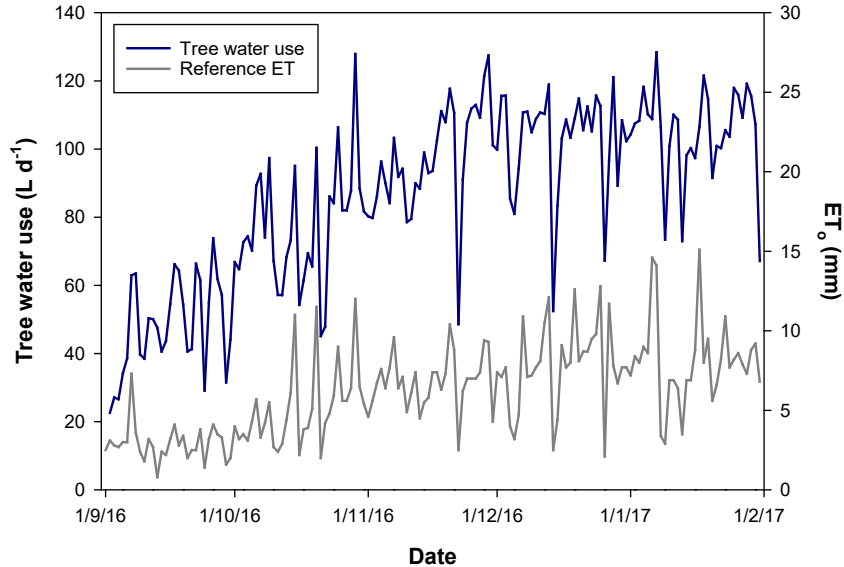
Fine roots live for a full growing season



Data from Ag Vic field site, minirhizotrons..



Atmospheric demand drives tree water use



...for a given tree size, once canopy established.

Data from Ag Vic field site, sapflow.

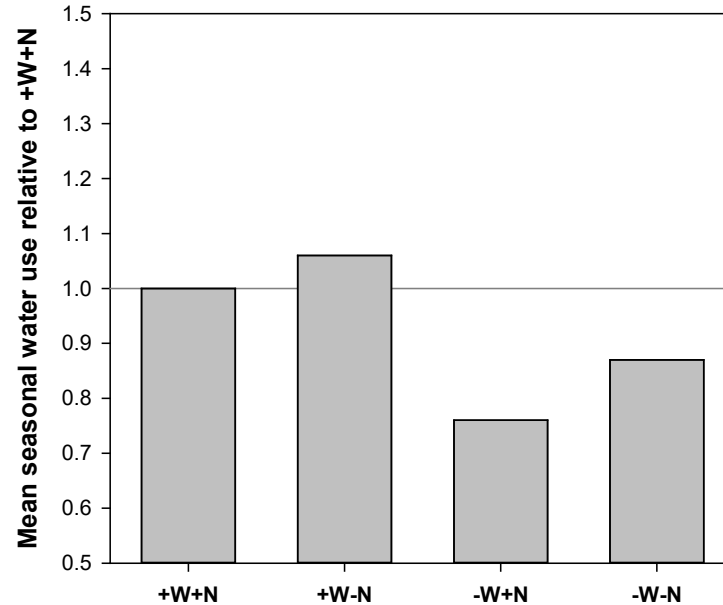


CMV
FARMS



CSIRO

Tree water use correlates with canopy size



Reduction in water use less than reduction in irrigation
(suggests >irrigation use efficiency).

Data from Ag Vic field site, sapflow.



Summary

Rootstock resilience:

- most rootstocks have good salinity tolerance,
- Barrier 1 & Controller 6 tolerated water deficit (needs field testing).

Direct measurements of tree water use, supported observations of improved yield/unit irrigation water with reduced water inputs.

Reduced water and/or N inputs had little effect on fine root growth, but increased root depth explored.

Older fine roots able to take up significant amounts N.

Indication that rootstock genotype can affect N allocation.



Implications for management

Scope to explore increased input use efficiencies – need to look at multiple seasons.

If active canopy, root systems will take up N addition.

Exploring a greater range of rootstocks and matching to scions may provide improved production .



Acknowledgements

- Annette Boettcher
- Bronwyn Smithies
- Damien Mowatt
- Nina Welti
- Steve Svaras
- Lynne MacDonald



Tim Preusker
& staff

AGRICULTURE VICTORIA

Thank you

CSIRO Agriculture & Food

Everard J Edwards
Research Team Leader

+61 8 8303 8649
everard.edwards@csiro.au

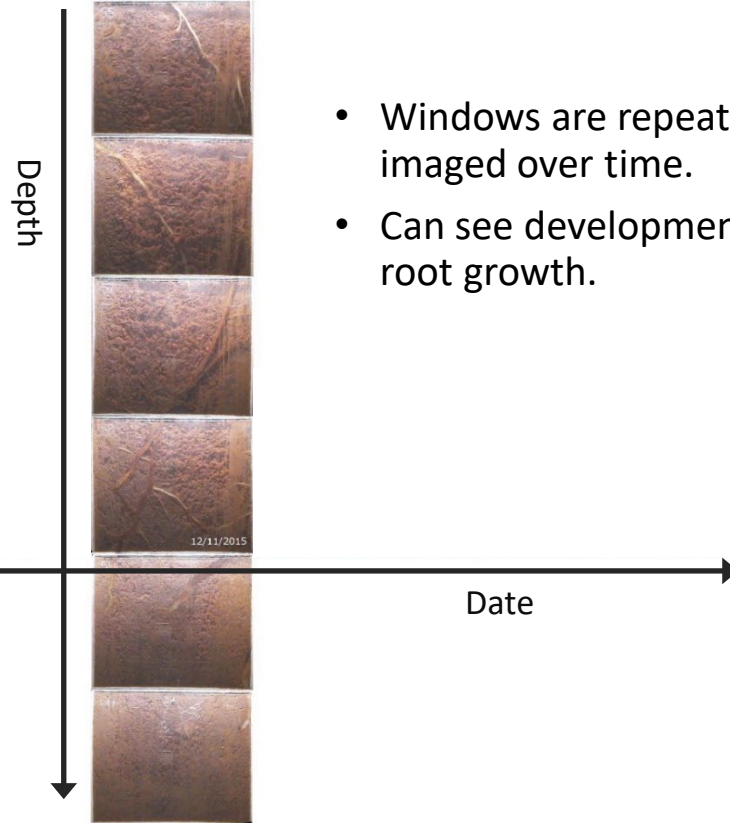
Australia's National Science Agency



ALMOND
FUND

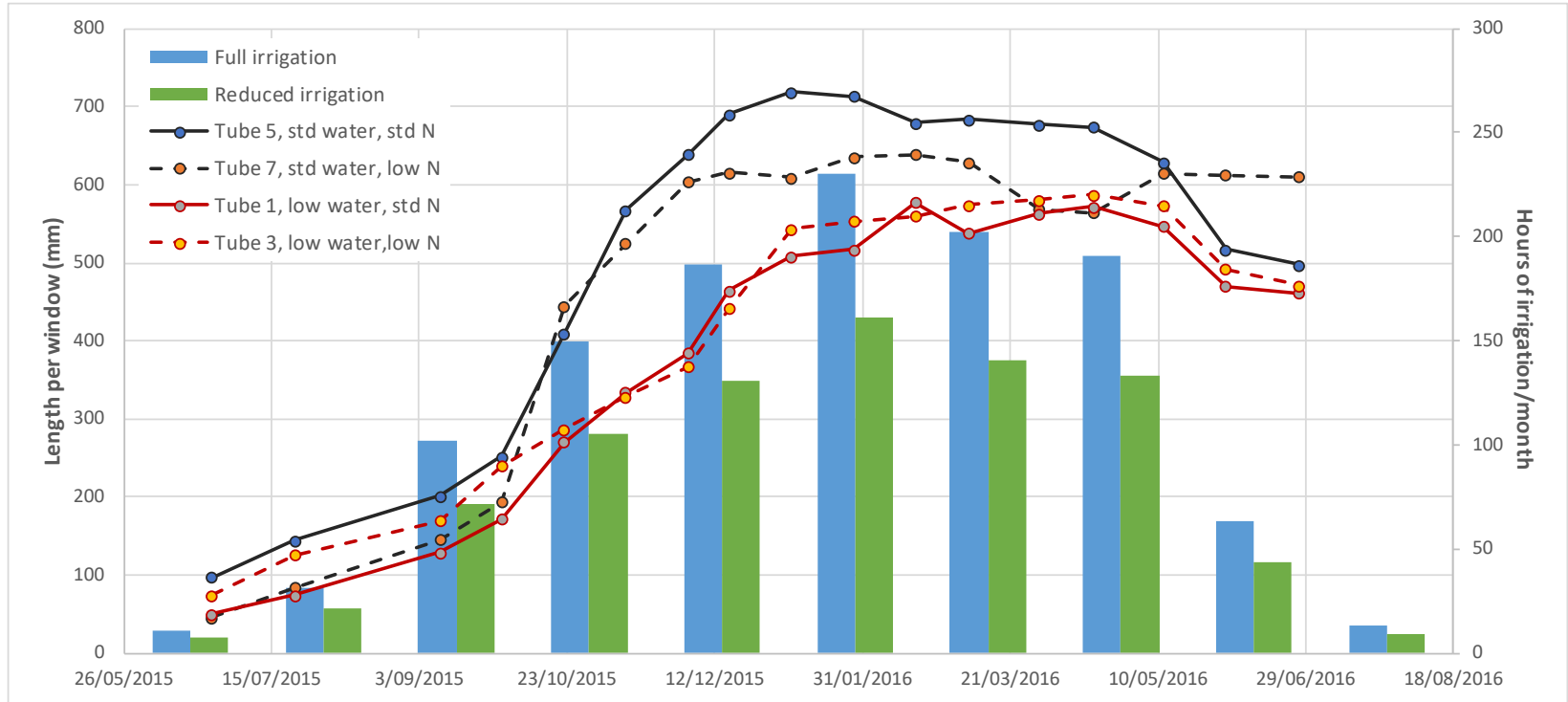


Root phenology: minirhizotrons

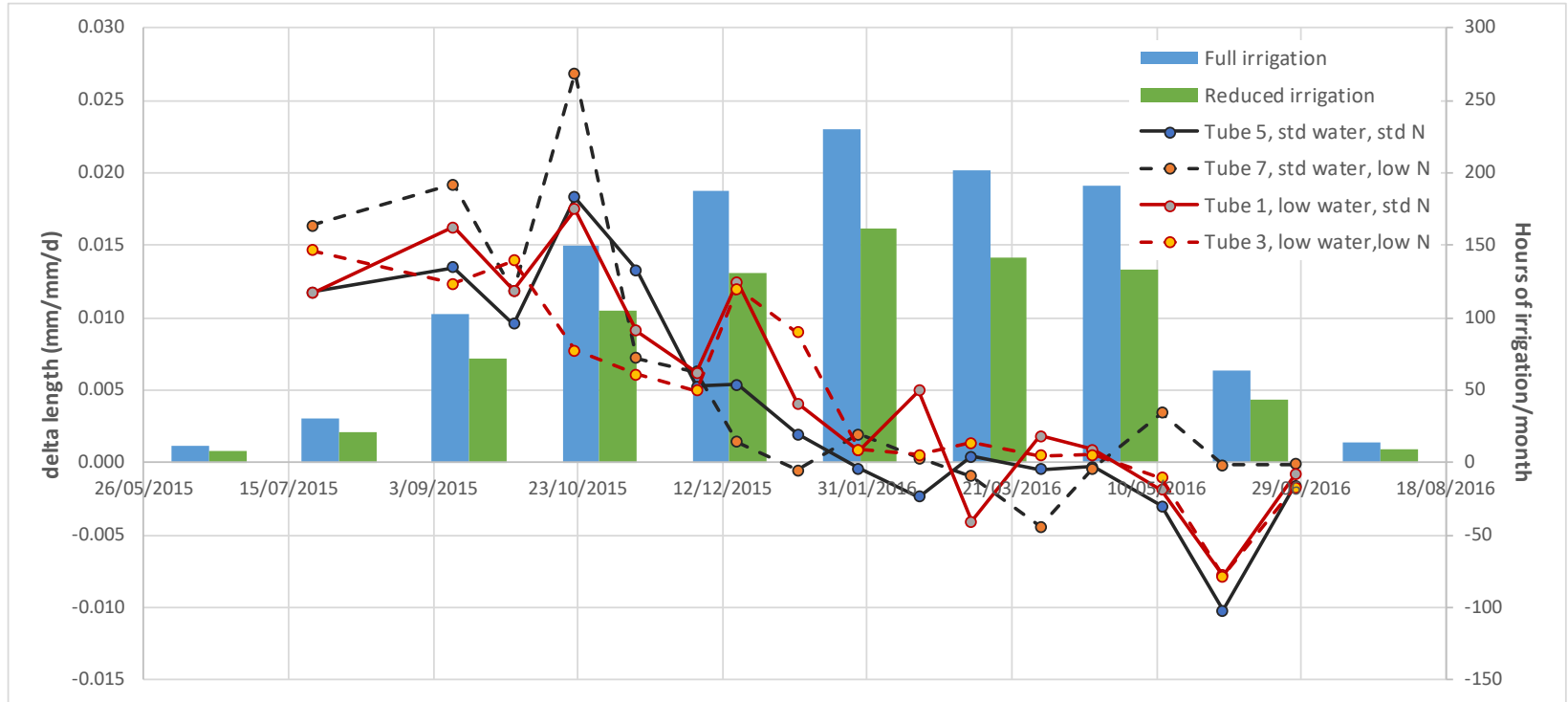


- Windows are repeatedly imaged over time.
- Can see development of root growth.

Root phenology update: root length



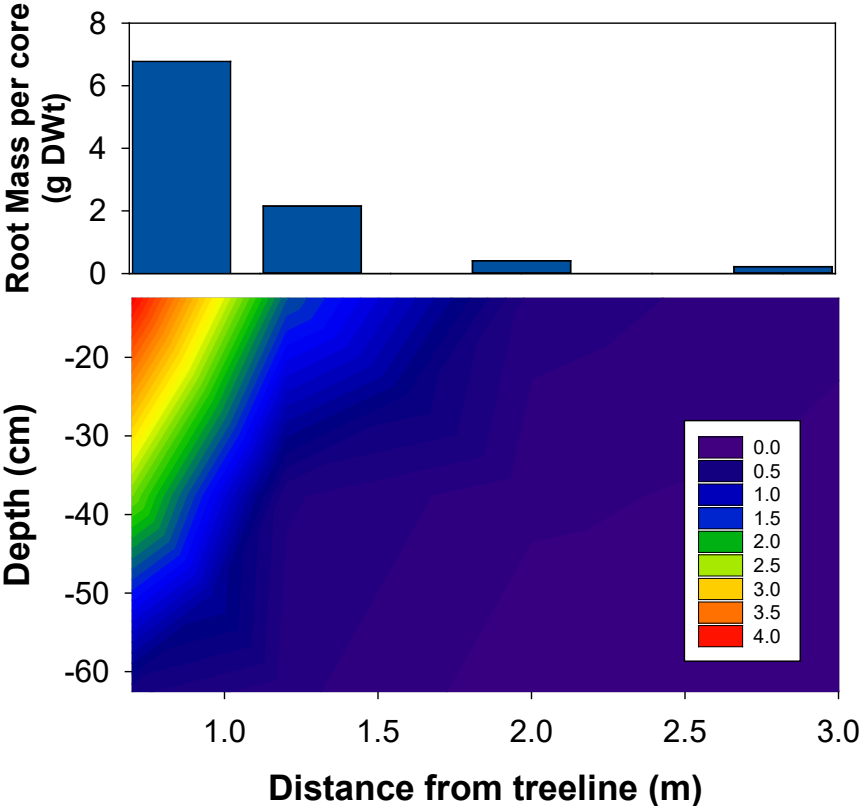
Root phenology update: root growth rate



Rooting zone: coring



dripper wetting zone



CMV FARMS

