

What is Natural Capital Accounting?

Natural capital refers to the world's stock of natural resources including soil, air, water, biodiversity, and ecosystems that humans and industries depend on.

Think of Natural Capital as the “bank of nature” that almond growers rely on. Things like healthy soils, clean water, pollinators, shade trees, and biodiversity in and around orchards.

Natural Capital Accounting is like “doing the books” for these natural assets. It puts a value on the hidden services nature provides, such as:

- 🌱 Capturing and storing carbon from the atmosphere.
- 💧 Water filtration and storage in natural and managed systems.
- 🌱 Soil health and fertility.
- 🐝 Pollination services from diverse ecosystems.
- 🌸 Biodiversity conservation across landscapes
- ☀️ Climate resilience through shade, cooling, and ecosystem stability.

By measuring these benefits, it shows how nature underpins orchard productivity and supply chain resilience. It helps growers, processors, and the industry make smarter decisions, demonstrate sustainability, and highlight the true value of nature in every almond.

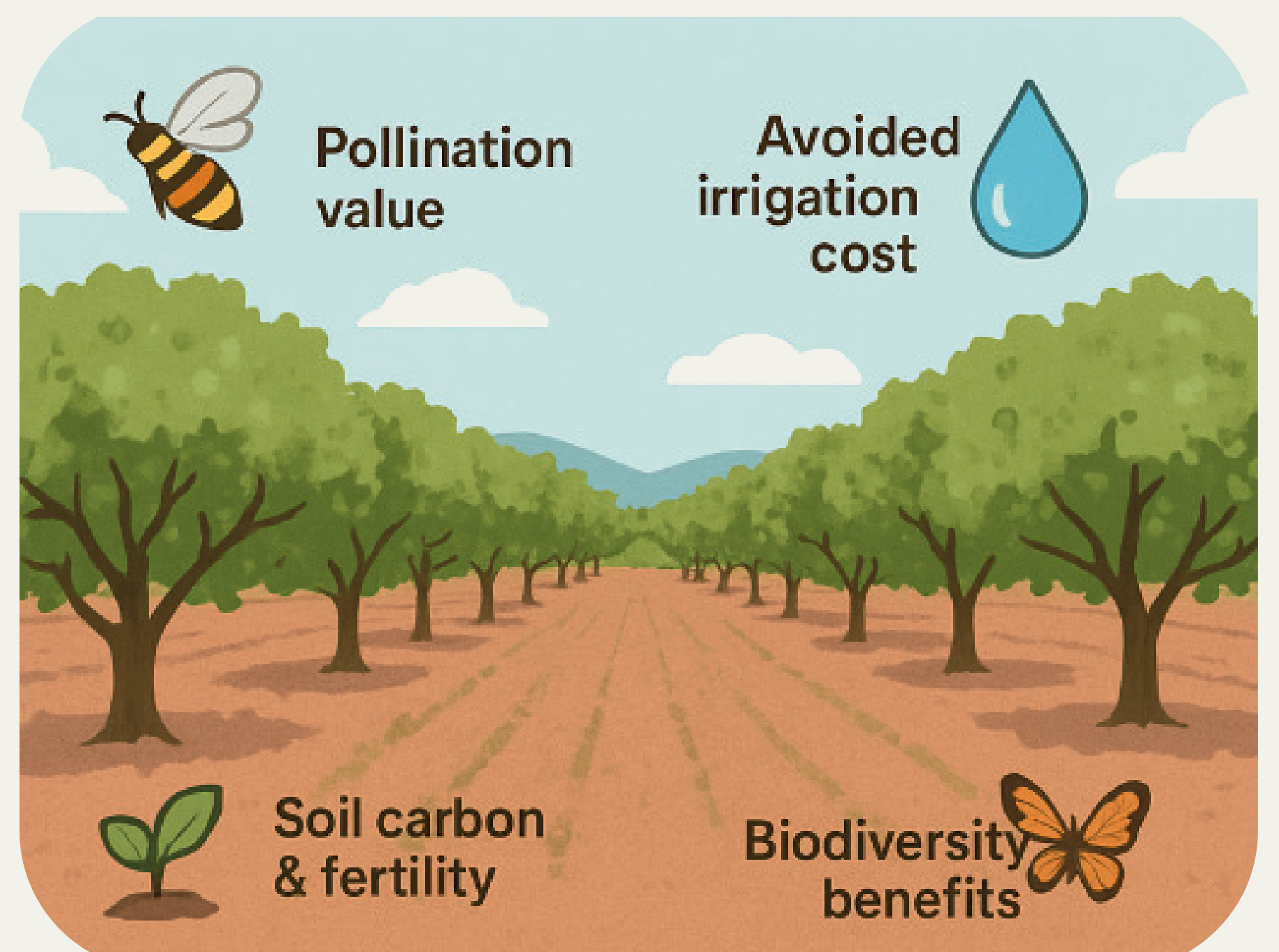


Natural Capital Accounting Tool

What if the almond industry, growers and processors had a simple, user-friendly way to measure the hidden value of nature in their orchards?

The biggest step, before even putting numbers to it, is **education!** Because you can't value what you don't know.

By first helping growers and processors understand the role of ecosystem services like pollination, avoided irrigation costs, and soil carbon benefits, a tool could then translate those insights into both financial metrics and sustainability indicators. By making natural capital measurable, it could bring the orchard's invisible assets into the supply chain conversation.



How much is nature really worth to almonds?

NATURAL CAPITAL ACCOUNTING
making the invisible value visible

Why This Tool Is Beneficial to the Almond Industry

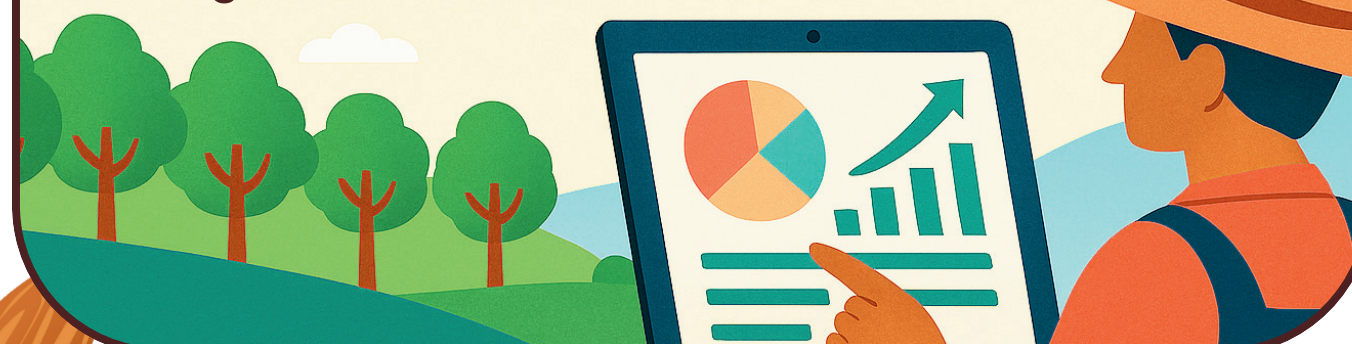
MAKES NATURAL CAPITAL TANGIBLE

- Translates ecosystem services like pollination, soil health, and water retention into measurable metrics.
- Highlight's the real value of nature's contributions to productivity.
- Opens pathways for future secondary farm revenue.



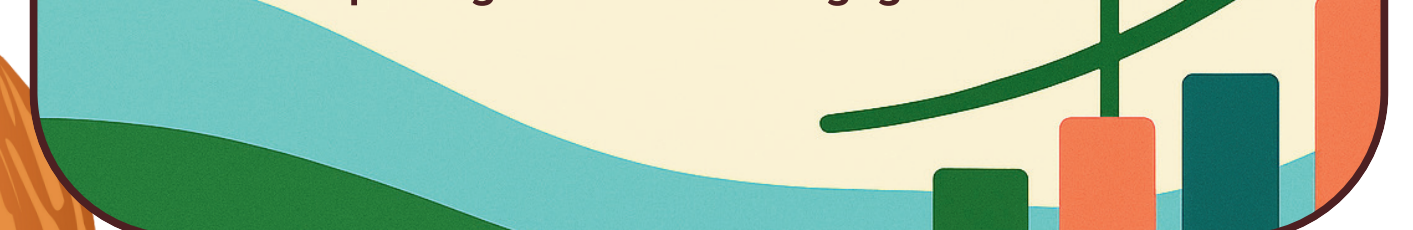
SUPPORTS BETTER DECISION-MAKING

- Provides data driven insights to guide farm management, resource allocation and sustainability investments.
- Encourages practices that enhance
- long term orchard health and resilience.



UNLOCKS NEW VALUE STREAMS

- Quantifies benefits like carbon sequestration and avoided irrigation costs, which can support access to:
 - Carbon markets,
 - Sustainability linked finance,
 - ESG reporting and investor engagement.



BUILDS INDUSTRY CREDIBILITY

- Tool would be designed to align with global standards ensuring the outputs are both credible and relevant.
- Positions the almond industry as a leader in natural capital innovation and sustainable agriculture.



MARKETING BENEFITS

- Enhances industry positioning with credible sustainability data.
- Builds consumer trust through transparency and accountability.
- Supports differentiation in global markets.



STRENGTHENS BIODIVERSITY AND CLIMATE RESILIENCE

- Encourages conservation of native vegetation and soil health to boost:
 - Pollinator populations,
 - Water efficiency,
 - Climate adaptation.

