



Water Advocacy for Almonds

Agenda

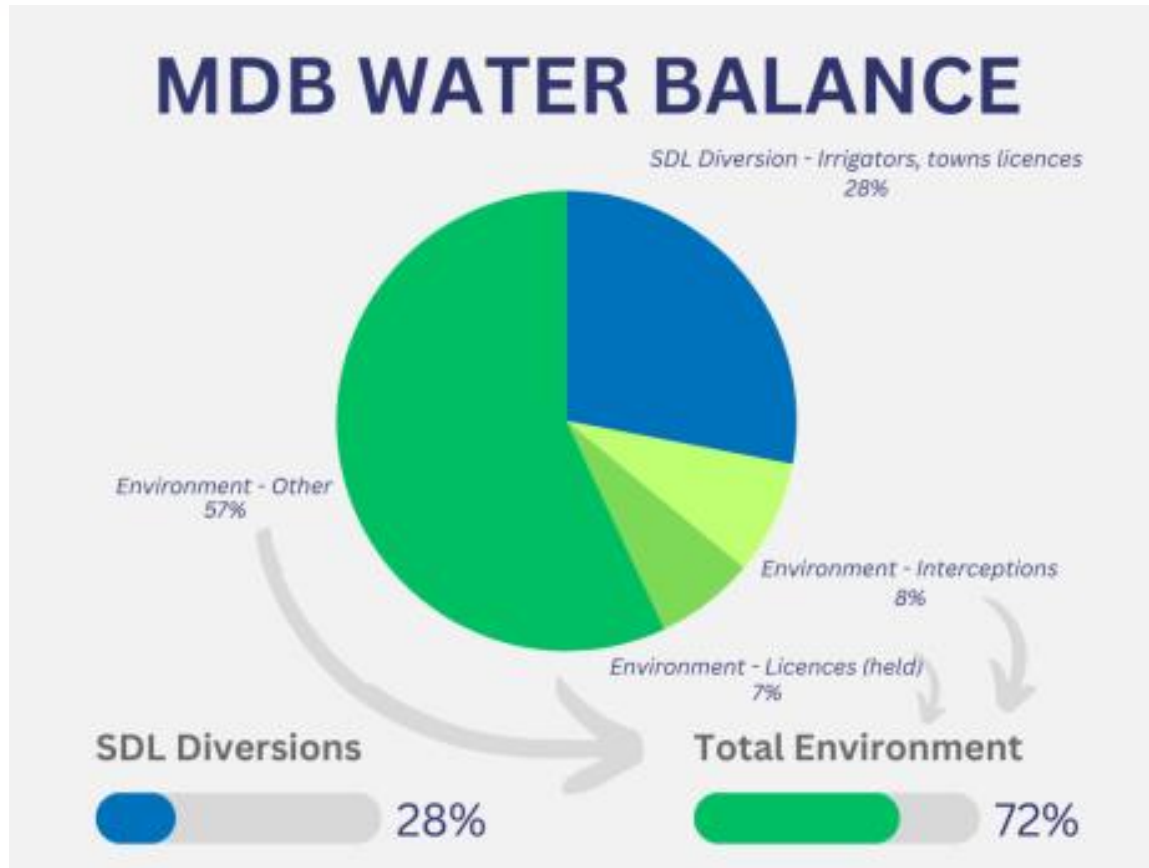
- Murray-Darling Basin Plan
 - What is it?
 - How's it going?
 - How did we get here?
 - Where to next?
- Advocacy approaches





Water Advocacy for Almonds

Murray-Darling Basin Plan: what is it?



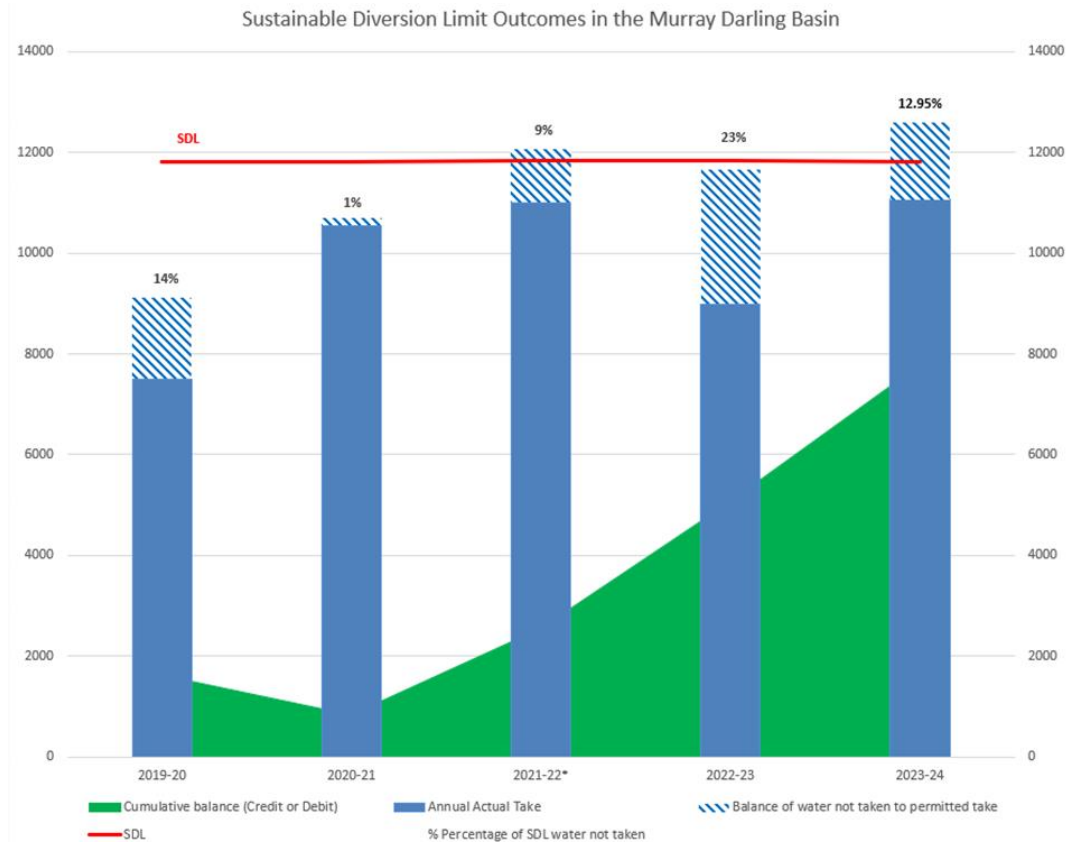
Aim: To address 'over-allocation' by establishing Sustainable Diversion Limits (SDLs), and reducing water usage to comply with these new limits.



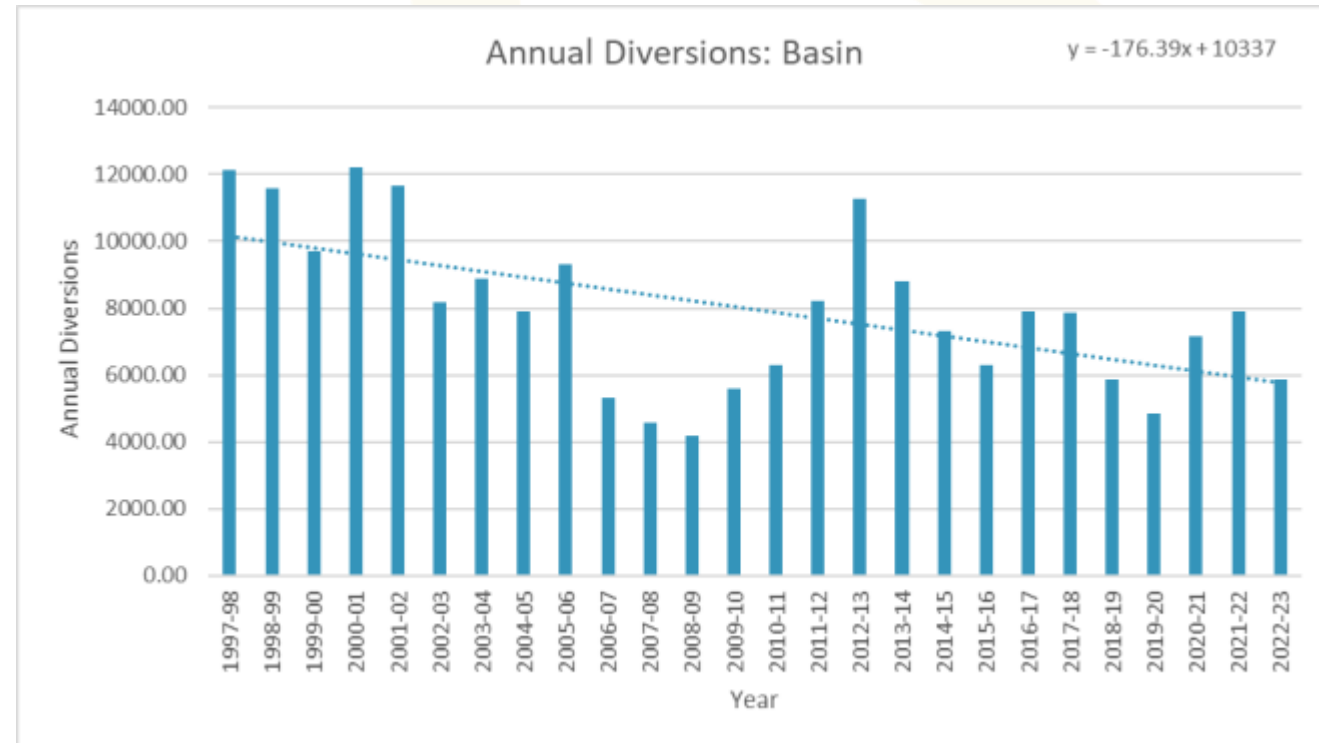
Water Advocacy for Almonds

Murray-Darling Basin Plan: how's it going?

Sustainable Diversion Limits (SDLs) have been established, and came into effect in 2019. Full compliance with SDLs* has been achieved.



Diversions in the Basin have, at most times, halved from pre-Plan levels.

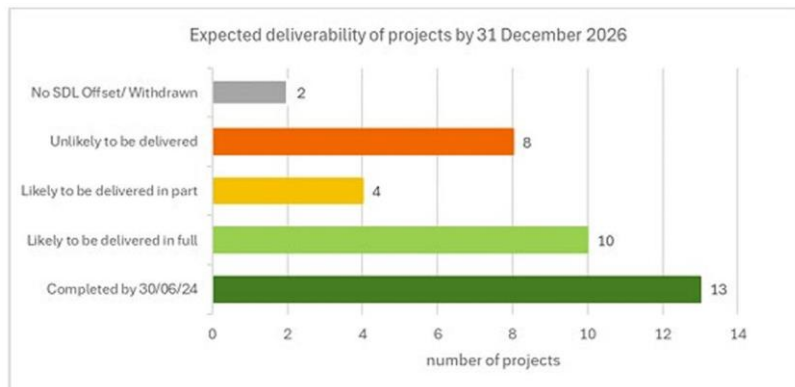




Water Advocacy for Almonds

Murray-Darling Basin Plan: how did we get there?

	Target	Progress (as of 30 June 2025)	Remaining	% complete
Bridging the Gap	2,075 GL	2,068.7 GL	6.9 GL	99.6%
SDLAM Supply & Constraints	605 GL	209 to 415 GL/y (estimate)	190-315 GL (estimate)	35% - 69%
SDLAM Additional HEW (‘the 450’)	62 GL (can go up to 450 GL)	124.4 GL 24.5 GL Efficiency 99.9 GL HEW	0 GL (325.6 GL possible)	100% of minimum 28% of maximum



Combined with pre-Plan water recovery programs, there has been a transfer of nearly one-third of consumptive water entitlements to the environment.



Murray Darling Basin Plan – Update

Murray-Darling Basin Plan: how's it going?

2025 Basin Plan Evaluation and Sustainable Rivers Audit

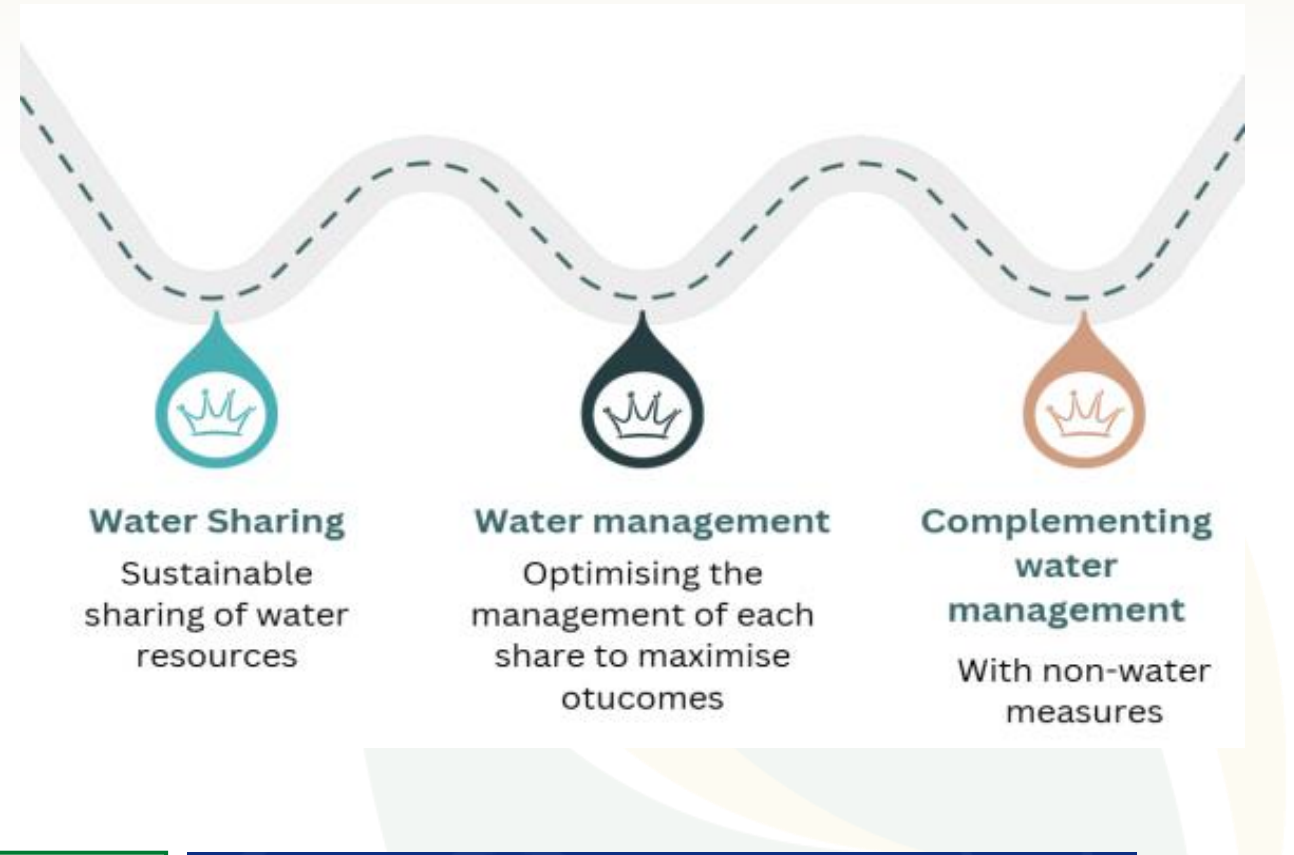
- › Good outcomes for flow-based indicators
- › Poorer outcomes for non-flow-based (native fish)
- › Good evidence towards complementary measures
- › Builds MDBA case for constraints
- › Challenges with socio economic

“Water for the environment is essential, but on its own is likely not sufficient. Factors such as water quality, riparian and floodplain management, pest control, instream habitat, river operations, constraints and works, and environmental water portfolio management are also crucial to achieve environmental outcomes.”

Valley	Longitudinal connectivity	Freshes and bankfull flows	Low floodplain connectivity	High floodplain connectivity	Floodplain tree stand condition	Fish species expectedness	Fish nativeness	Fish recruitment
Border Rivers	Very good (Stable)	Good (Variable)	Fair (Increasing)	Good (Increasing)	Good (Stable)	Good (Stable)	Fair (Variable)	Fair (Variable)
Castlereagh	NA* (NA)*	Very good (Variable)	Fair (Variable)	Fair (Variable)	Fair (Variable)	Poor (Stable)	Fair (Variable)	Very Poor (Variable)
Condamine	Fair (Stable)	Good (Variable)	Poor (Variable)	Fair (Variable)	Fair (Variable)	Fair (Stable)	Good (Variable)	Poor (Decreasing)
Darling	Good (Variable)	Good (Variable)	Poor (Increasing)	Fair (Decreasing)	Good (Stable)	Poor (Stable)	Fair (Stable)	Fair (Stable)
Gwydir	Very good (Stable)	Very good (Stable)	Poor (Variable)	Fair (Increasing)	Fair (Variable)	Fair (Stable)	Fair (Increasing)	Fair (Decreasing)
Macquarie	Very good (Stable)	Very good (Variable)	Fair (Variable)	Fair (Decreasing)	Good (Stable)	Poor (Stable)	Fair (Increasing)	Very Poor (Variable)
Namoi	Very good (Stable)	Good (Variable)	Fair (Variable)	Fair (Variable)	Poor (Variable)	Fair (Stable)	Fair (Variable)	Poor (Stable)
Paroo	NA* (NA)*	NA* (NA)*	Fair (Variable)	Fair (Decreasing)	Good (Stable)	Poor (Stable)	Poor (Stable)	Poor (Stable)
Warrego	Very good (Stable)	Very good (Variable)	Poor (Variable)	Fair (Decreasing)	Fair (Variable)	Fair (Stable)	Fair (Decreasing)	Poor (Stable)
Avoca	NA* (NA)*	NA* (NA)*	Fair (Variable)	Fair (Increasing)	Fair (Decreasing)	Poor (Stable)	Poor (Variable)	Very Poor (Decreasing)
Broken	Poor (Variable)	Good (Stable)	Good (Increasing)	Fair (Increasing)	Fair (Stable)	Poor (Stable)	Fair (Variable)	Very Poor (Stable)
Campaspe	Very good (Variable)	Very good (Increasing)	Good (Increasing)	Good (Stable)	Fair (Stable)	Poor (Stable)	Poor (Variable)	Very Poor (Variable)
Central Murray	Good (Variable)	Very good (Variable)	Fair (Variable)	Fair (Variable)	Fair (Stable)	Poor (Stable)	Fair (Variable)	Poor (Variable)
Goulburn	Good (Variable)	Very good (Stable)	Fair (Variable)	Fair (Decreasing)	Good (Stable)	Poor (Stable)	Poor (Variable)	Very Poor (Decreasing)
Kiewa	NA* (NA)*	NA* (NA)*	Good (Variable)	NA* (NA)*	Very good (Variable)	Poor (Decreasing)	Poor (Increasing)	Very Poor (Increasing)
Lachlan	Very good (Stable)	Very good (Variable)	Fair (Increasing)	Fair (Increasing)	Fair (Decreasing)	Poor (Stable)	Fair (Variable)	Very Poor (Increasing)
Loddon	Good (Variable)	Very good (Variable)	Fair (Variable)	Fair (Increasing)	Poor (Decreasing)	Poor (Stable)	Fair (Variable)	Very Poor (Stable)
Lower Murray	Fair (Variable)	Fair (Variable)	Fair (Variable)	Fair (Variable)	Fair (Variable)	Poor (Stable)	Fair (Stable)	Poor (Increasing)
Mitta Mitta	NA* (NA)*	NA* (NA)*	Good (Variable)	NA* (NA)*	Very good (Variable)	Poor (Stable)	Poor (Variable)	Very Poor (Stable)
Murrumbidgee	Very good (Stable)	Good (Variable)	Good (Increasing)	Good (Stable)	Poor (Decreasing)	Poor (Stable)	Poor (Variable)	Very Poor (Variable)
Ovens	Very good (Variable)	Very good (Variable)	Good (Decreasing)	NA* (NA)*	Good (Stable)	Poor (Stable)	Fair (Variable)	Fair (Increasing)
Upper Murray	NA* (NA)*	NA* (NA)*	Good (Variable)	NA* (NA)*	Good (Stable)	Poor (Stable)	Fair (Variable)	Very Poor (Increasing)
Wimmera	NA* (NA)*	NA* (NA)*	Fair (Variable)	Fair (Increasing)	Very good (Variable)	Fair (Stable)	Fair (Variable)	Very Poor (Variable)



Advocacy – NIC Basin Plan Review



Academic approach to BP Review

FPJ2202 – Freak, C & Lowein, Z (2025), The hydro-illogical cycle: Breaking the crisis mindset of water policy with the Triple Crown of Water Reform Framework

Home » Shop » Journal Articles » FPJ2202 – Freak, C & Lowein, Z (2025), The hydro-illogical cycle: Breaking the crisis mindset of water policy with the Triple Crown of Water Reform Framework

Climate Climate change Drought Infrastructure Risk Sustainability Trade Water Water markets Water rights

 Australian Farm Institute
New thinking about agriculture



Advocacy – NIC Basin Plan Review



National Irrigators' Council
Food · Fibre · Future

[HOME](#)

[ABOUT US](#)

[ACHIEVEMENTS](#)

[OUR COMMUNITY](#)

[NEWS & EVENTS](#)

[POLICY](#)

[RESEARCH & ANALYSIS](#)

[INDUSTRY RESOURCES](#)

[MEMBERS](#)

NATIONAL IRRIGATORS' COUNCIL

MOVING FORWARDS: OUR REVIEW OF THE MURRAY DARLING BASIN PLAN

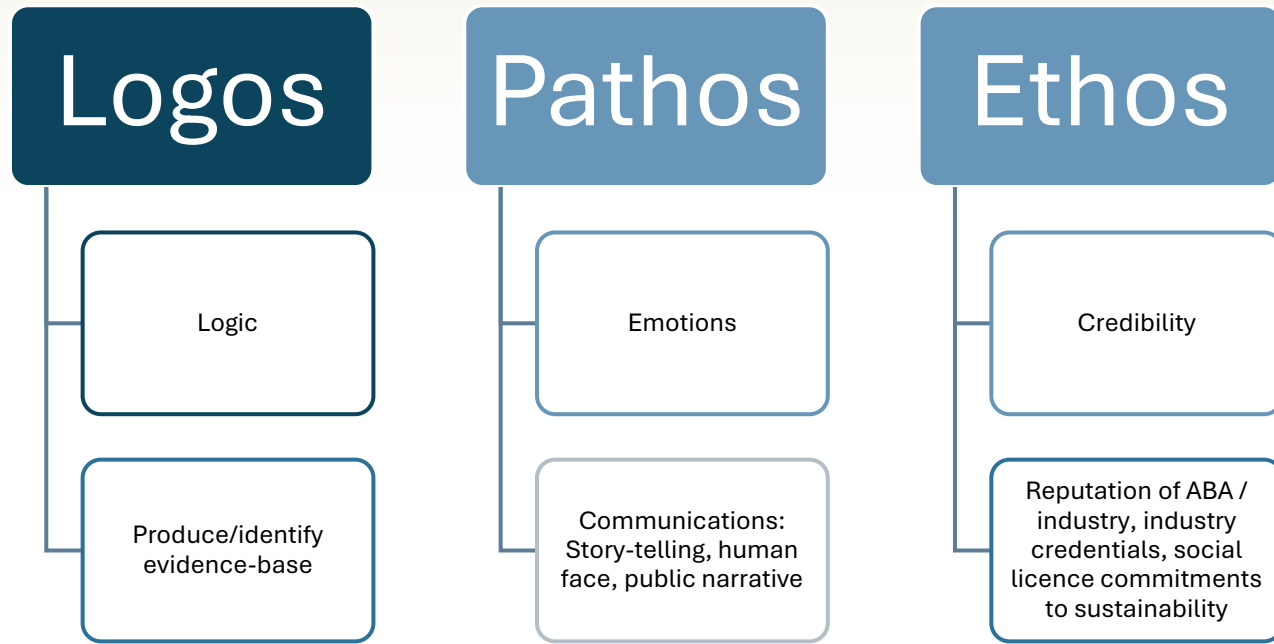
Advocating for the Australian irrigated agriculture industry



Moving Forwards: A Review of the Murray



How we advocate



- **Upcoming NIC campaign:** *Basin Plan₂O — Don't Just Add Water*
- **NIC Cross-Commodity Forum**
 - Focus on shared messaging, collaboration and data challenges
- **NIC social licence work program**
 - 'Our pledge' similar to Seafood Industry
- **Working with partners** – MDA, research institutes, scientists, etc



Questions

